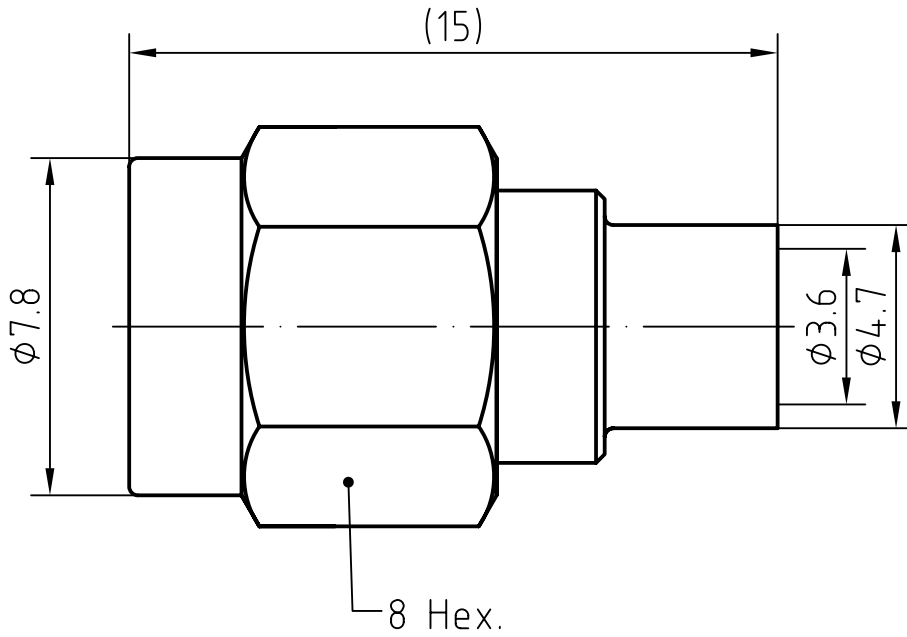
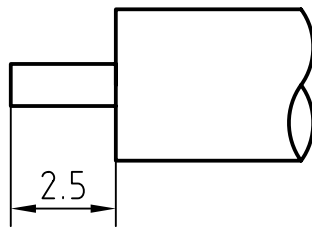


DRAWING



CABLE(UT 141, RG 402)



6	1	O ring	Silicone rubber	
5	1	Spring	Beryllium copper/Nickel plated	
4	1	Coupling nut	Brass/Gold plated	
3	1	Body	Brass/Gold plated	
2	1	Insulator	PTFE	
1	1	Center contact	Beryllium copper/Gold plated	
Itemref	Quantity	Title/Name, designation, material, dimension etc		Article No./Reference

Designed by Mingang Han	Checked by Jinlong GU	Approved by - date Hongyu Du	File name (RP)SMA-KB3	Date 09.02.02	Scale 6 : 1
----------------------------	--------------------------	---------------------------------	--------------------------	------------------	----------------



China Xi'an Honor
Scien-tech Co.,Ltd

(RP)SMA-KB3

Edition 1.0	Sheet 1/1
----------------	--------------

CHARACTERISTICS

DESCRIPTION: RP SMA Type male connector

Electrical data:

Impedance:	50 ohm
Frequency range:	DC to 18 GHz
VSWR:	$\leq 1.04 + 0.02 \times f \text{ [GHz]}$
Insertion loss:	$\leq 0.05 \times \sqrt{f \text{ [GHz]}} \text{ dB}$
Insulation resistance:	$\geq 5000 \text{ M}\Omega$
Test voltage:	1000 V rms
Working voltage:	480 V rms
Contact resistance:	
1). Centre contact:	3.0 m Ω
2). Outer conductor:	2.0 m Ω
Power handling (at 20 ° C, sea level, VSWR 1.0):	$\leq 200 \text{ W @ 2 GHz}$;
RF-leakage	$\geq 100 \text{ dB up to 1 GHz}$

- Limitations are possible due to the used cable type -

Environmental data:

Temperature rating:	-65 ° C to +165 ° C
2002/95/EC (RoHS):	Compliant

Mechanical data:

Mating cycles:	≥ 500
Coupling nut retention	$\geq 270 \text{ N}$
Coupling test torque:	$\leq 1.7 \text{ Nm}$
Recommended torque:	0.46 Nm to 0.69 Nm

Suitable cables:

UT 141, RG 402



XAHONOR Scien-tech Co.,Ltd

[Http://www.xahonor.com](http://www.xahonor.com)

E-mail:sales@xahonor.com